

28th November 2019

1 Triton Square refurbishment

Thank you for the continued support and patience as we progress with the refurbishment of 1 Triton Square.

Our Residents' Noticeboard (located at the top of the basement ramp) contains our weekly update information and other relevant contact information.

JOBS AND TRAINING

We are working with the London Borough of Camden, the Kings Cross Construction Skills Centre, West Euston Partnership and Women in Construction to advertise employment and training opportunities locally, including apprenticeships and work placements. Please get in touch with our Community Liaison Manager, Zen Mumtaz, on 07710 708 347 or Zenab.mumtaz@lendlease.com for more information about the opportunities available.

CONSTRUCTION UPDATE

Good progress continues to be made on the project throughout a number of areas on site from the basement to the roof.

We are aware that trespassers have accessed site out of hours. There is nothing on site of any value.

Full CCTV is in operation around the site and there is full-time surveillance. There are significant risks with entering a live demolition site. If you see any suspicious activity please contact 020 3955 5410 immediately. We have full-time security in place who are in contact with the London Metropolitan Police.

ROOF

The roof is now complete in readiness for steelwork erection. This is planned for early 2019.

BASEMENT

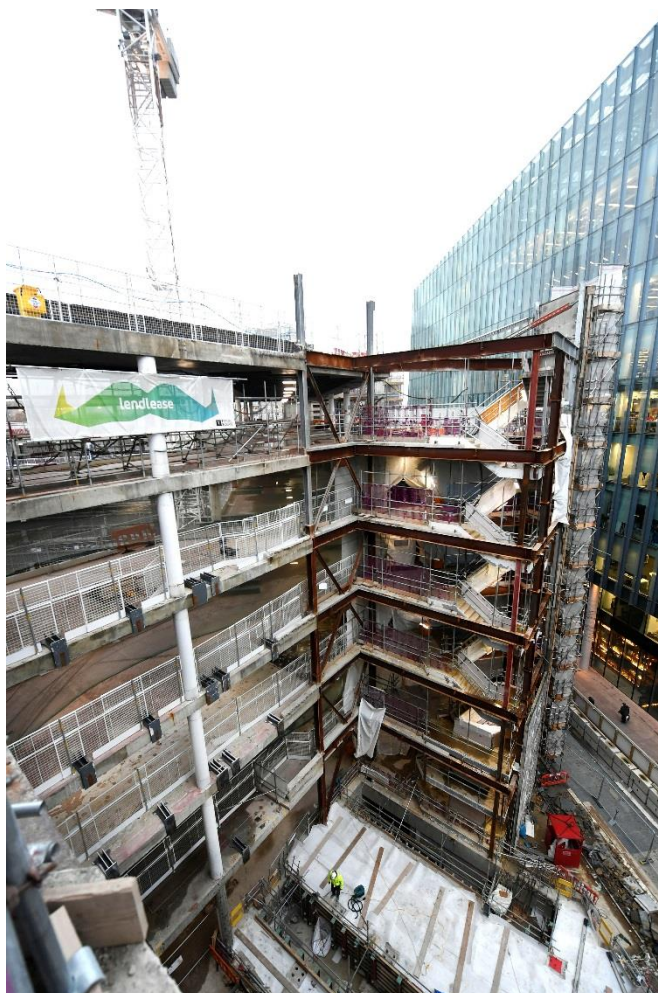
We have continued to make strong progress with the removal of the foundation slab and we are now approximately 80% complete pouring the new concrete slab. Works are progressing reinforcing the concrete columns ahead of concrete encasement and completing drainage works. We are currently preparing the area for the commencement of Blockwork which will form all of the new plantrooms.

MAIN ENTRANCE (Adjacent to Plaza)

Significant progress has been made in the South East corner with the reinstatement of the new concrete slab. Connection brackets have been installed on the lower floors and steel erection is planned imminently.

ATRIUM

Steelwork erection has commenced in the period in this area as we infill the atrium. We have started to deliver the new metal floor decking which will allow the follow on concrete sub-contractor to commence in the New Year.



What to expect next

Our scaffold gantry fan erection has now been completed. This has been erected during weekends and has been constructed to provide further added safety to members of the general public with steelwork erection at high level and subsequent cladding works.

For any further queries, please don't hesitate to contact one of the team below who will be happy to assist:

**Main Contractor
Lendlease**

Campbell Rowe / Chris Carragher
D 0203 955 5410
M 07808 856 098
Campbell.rowe@lendlease.com
1tscontactus@lendlease.com

**Project Manager
M3 Consulting**

Alec Smith
D 020 7710 4452
M 077 9671 4600
A.Smith@m3c.co.uk

**Estate Manager
Regent's Place Management**

Donna Birch
D 02073 806 056
M 07739 244 227
donna.birch@regentsplace.com