

25<sup>th</sup> September 2018

## 1 Triton Square refurbishment



Thank you for your continued support and patience as we progress with the refurbishment of 1 Triton Square.

Our Residents' Noticeboard has now been installed on the North-West corner of the site (top of the ramp into the basement) and is updated weekly with progress and relevant contact information.

### **JOBS AND TRAINING**

We are working with the London Borough of Camden, the Kings Cross Construction Skills Centre and West Euston Partnership to advertise employment and training opportunities locally, including apprenticeships and work placements. Please get in touch with our Community Liaison Manager, Zen Mumtaz, on 07710 708 347 or [Zenab.mumtaz@lendlease.com](mailto:Zenab.mumtaz@lendlease.com) for more information about the opportunities available.

### **COMMUNITY ENGAGEMENT**

We have completed our second Community Project. This year's project was to assist in the refurbishment of a local community centre for the Third Age Project.

### **CONSTRUCTION UPDATE**

We are aware that trespassers have accessed site out of hours. There is nothing on site of any value. Full CCTV is in operation around the site and there is full-time surveillance. There are significant risks with entering a live demolition site. If you see any suspicious activity please contact 020 3955 5410 immediately. We have full-time security in place who have previously been in contact with the London Metropolitan Police.

Good progress continues to be made on the project throughout a number of areas on site from the basement to the roof. Progress has continued in the South East corner with the deconstruction of the existing stone cladding and lift cores and as progress is made, the scaffold is being dismantled closely behind, revealing the frame of the building.

The successful and safe installation of our second Tower Crane (TC2) occurred in the period.

### Roof

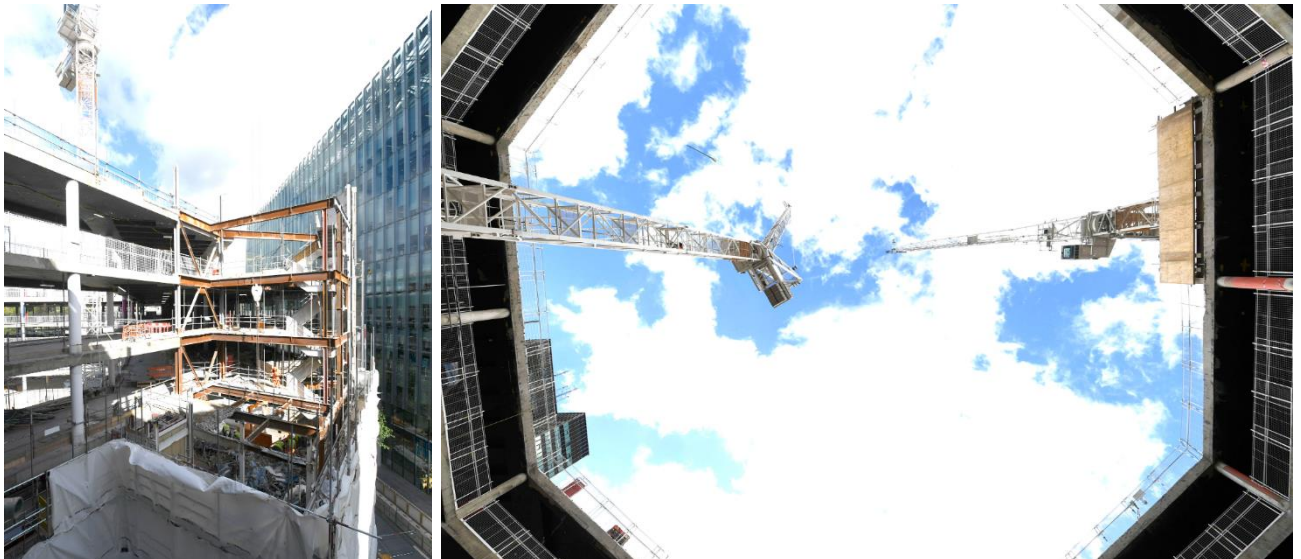
Demolition of the four corner cores has commenced whilst the remaining level 6 terrace cut backs are completed. The final operation will be to remove all of the existing screed from the slab itself. The scaffold within the atrium has now been fully dismantled and all of the old atrium balconies have been removed from site.

### Basement

We have made strong progress with the removal of the foundation slab and commencement of pouring the new slab. Works are progressing to install the new reinforcement to the West and East areas as well as installing drainage. All of the replacement columns have now been completed.

### Main Entrance (Adjacent Market Square)

Our lightweight mobile crane has continued to remove the existing stone cladding however the installation of TC2 will now greatly assist this process.



### WHAT TO EXPECT NEXT

We are continuing with steel strengthening activities to the stair cores by welding stiffener plates to the existing columns and these works will continue for some months. The external façade clean to the stone areas has commenced in the month.

Deliveries for the steel atrium infill will commence in the next period as we create the new atrium shape.

The soft strip inside the building has continued with all waste items segregated at source before being removed from site. This is likely to complete in the next 6 weeks.

For any further queries, please don't hesitate to contact one of the team below:

#### Main Contractor

Lendlease  
Campbell Rowe / Chris Carragher  
D 0203 955 5410  
M 07808 856 098  
Campbell.rowe@lendlease.com  
1tscontactus@lendlease.com

#### Project Manager

M3 Consulting  
Alec Smith  
D 020 7710 4452  
M 077 9671 4600  
A.Smith@m3c.co.uk

#### Estate Manager

Regent's Place Management  
Donna Birch  
D 02073 806 056  
M 07739 244 227  
donna.birch@regentsplace.com